



58-25 Queens Blvd., Woodside, NY
11377
T: (718) 280-5000; (800) 627-1244
F: (718) 204-4726
E: info@classicescapes.com
W: www.classicescapes.com

Nature & Cultural Journeys
for the Discerning Traveler

YOU ARE CORDIALLY INVITED TO JOIN
THE FT. LAUDERDALE MUSEUM OF DISCOVERY & SCIENCE
ON A LUXURY UNDER CANVAS SAFARI TO
TANZANIA
ANIMAL KINGDOM'S 'GARDEN OF EDEN'

JUNE 10 TO 21, 2016



COUNTRY OVERVIEW ~ TANZANIA

Discover quintessential African landscapes when you explore Tanzania, the perfect East African destination for any traveler with an open mind and heart to experiencing wildlife and culture, past and present. A relaxed attitude combined with some of the best wildlife spotting on the continent is within affordable reach. Your safari hits all of the incredible spots, from the unique eco-system of Ngorongoro Crater, the vast savannahs of the Serengeti, and the baobab filled Tarangire. Along the way, see where the roots of modern man were unearthed by the Leakeys and visit a Maasai village. Venture into remote areas staying in small tented camps that seemingly blend into the landscape – intimate, exclusive and serenaded only by the wildlife around you. An unforgettable adventure awaits you!



YOUR ITINERARY

DAY 1~FRIDAY~JUNE 10

FT. LAUDERDALE/ EN ROUTE

Your journey begins as you board your overnight flight to Amsterdam. (Meals Aloft)

DAY 2~SATURDAY ~ JUNE 11

ARUSHA

Upon arrival in Arusha in the afternoon (*depending on your flights*), you will be met by your Classic Escapes representative and transferred to your hotel, Lake Duluti Serena Hotel. This is an absolutely wonderful place to begin your journey to Tanzania. Following all your flights this pleasant and tranquil lodge located on a coffee plantation on the shores of Lake Duluti, the Lake Duluti Serena Hotel is the perfect place to relax before embarking on your safari experience. Designed as an authentic African village, guests are housed in cottages thatched with banana fronds, surrounded by tropical shade trees and bougainvillea. All guest rooms have en suite bathrooms and all amenities. The lodge boasts magnificent views of the mighty snow-capped Mount Kilimanjaro on one side and Lake Duluti and the rugged peaks of Mount Meru on the other.



Overnight at the LAKE DULUTI SERENA HOTEL. (Meals Aloft) <http://www.serenahotels.com/serenaarusha/default-en.html>.

DAYS 3/4~SUNDAY/MONDAY~JUNE 12/13

TARANGIRE NATIONAL PARK

Wake up feeling refreshed and eager to begin your safari adventure as you drive to Tarangire National Park. And we run the risk of spoiling you with the abundance of your first stop—Tarangire National Park, the third largest national park in Tanzania. The feeling that this is a special, almost magical place strikes you as soon as you enter Tarangire, and you witness your first baobab tree. Here the gently rolling countryside is dotted with these majestic trees, which seem to dwarf the animals that feed beneath them. Called the “tree of life,” many myths and legends surround

Adansonia digitata (*Adansonia* for the French surgeon Michel Adanson and *digitata* meaning hand-like, a reference to the shape of the leaves). Your guides regale you with one or two of these tales as you pass through the park. This stretch of Africa is spectacular in the dry season when many of the migratory wildlife species come back to the



permanent waters of Tarangire River. Huge herds of wildebeest, zebra, eland and oryx gather to stay in

Tarangire until the onset of the rains when they migrate again to good grazing areas. For those who love birds, Tarangire has over 300 bird species. But in addition to all those magnificent trees, birds and beasts, Tarangire is superlative for another reason—elephants. Tarangire is home to the largest population of elephants in northern Tanzania, now numbering close to 2,500 individuals.

Located in the middle of the Tarangire wilderness, Oliver's Camp has one of the most wonderful settings one could imagine and offers an unparalleled bush experience. From the camp, a much wider ecosystem can be overlooked: the Ngorongoro highlands, the Great Rift Valley, the Lake Manyara region and of course Tarangire National Park itself. There is no better location to discover the breathtaking beauty and the complexity and ultimate fragility of this unique environment.



Oliver's staff has been a team for many years and as a result, a stay in camp feels like you're joining a family. Naturalist guides will not only be able to find you lion prides, but will also be able to tell you about the different family members of the lion prides, their characters and their habits. Walking safaris are the specialty of the camp—the depth of knowledge and experience of the camp naturalist guides makes the experience one to never forget.

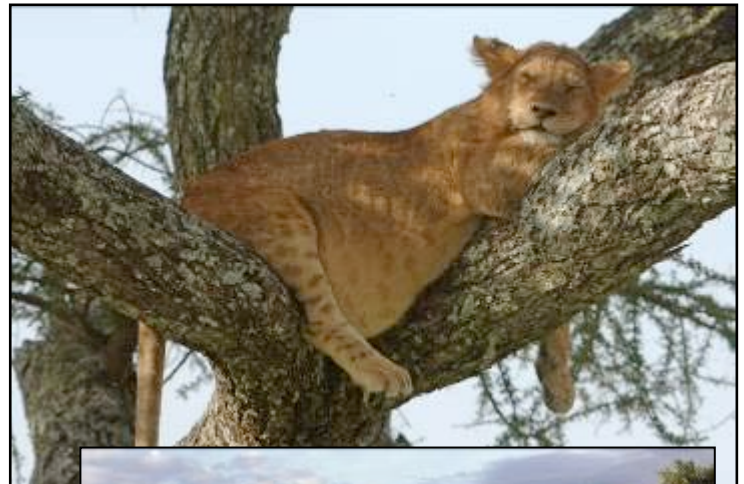
The intimate camp features only ten beautifully furnished guest tents. Solid wooden furniture, beautiful clothes and outdoor showers can be taken under the Tarangire sky. In the evening, you can relax or read in the lounge and library tent, or drink sundowners at the fireplace.

Overnights at OLIVER'S CAMP. (B,L,D Daily) www.asilialodges.com

DAY 5~TUESDAY~JUNE 14

LAKE MANYARA NATIONAL PARK/NGORONGORO CONSERVATION AREA

Your morning drive takes you to Lake Manyara National Park (80,300 acres,) an ornithological paradise with over 350 species of birds. You may see Verreaux's eagle, a variety of vultures, storks, swifts and swallows winging their way atop the spectacular cliffs overlooking the lake. Lake Manyara, at 3,150 feet varies in salinity levels with wetter and drier climate cycles, and at times it is replete with flamingos, pelicans, storks and cormorants. Springs in the park's northern end support a dense groundwater forest of magnificent giant fig and mahogany trees which shelter blue vervet monkeys and an abundance of baboons, bushbuck, waterbuck, and elephant. South of the groundwater forest, acacia woodland and open grassland are frequented by buffalo, wildebeest, impala, giraffe, zebra, and the elusive tree-climbing lions – the signature of this



park. Perhaps the most recognizable tree found here is the baobab tree, which folklore says was uprooted and planted upside down. The hippo pool, where visitors may get out of their vehicles, is located on a freshwater stream that enters the lake at its northern tip.

In the afternoon, head to your accommodation, The Ngorongoro Serena Safari Lodge, which is built at the rim of the crater. The ivy-covered native stone blends masterfully with its surroundings and the flowering plants attract a plethora of colorful birds. Most of the 75 rooms have private terraces with views of the crater floor and some of its animals. Here, visitors exist in perfect harmony with the natural environment and the wildlife that inhabits it.

Overnights at the NGORONGORO SERENA SAFARI LODGE. (B,L,D) www.serenahotels.com/serenangorongoro

DAY 6~WEDNESDAY~JUNE 15

NGORONGORO CRATER

Today's drive takes you to Ngorongoro Crater, a World Heritage site, which is an extinct volcano and the largest unbroken caldera in the world. The cone is believed to have collapsed nearly two million years ago, and while the cone was standing, it could have been as tall, if not taller, than Mount Kilimanjaro. The crater (1,800 feet deep and 102 square miles) is a microcosm of East African scenery with abundant wildlife – more than 25,000 larger animals, mostly zebra and wildebeest. This is also the best place to see black rhino in Tanzania as it is protected around the clock, and the magnificent black-maned lions. Over the years, the floor of this crater has become mostly savannah (grassland) and there's also a soda lake whose size changes depending on the rains that is the lifeline of this amazing land. On this lake, marvel at the colorful flamingoes and a variety of other water birds – more than 100 species of birds found here and not in the Serengeti. Resident ostriches, crowned cranes, and kori bustards are joined seasonally by migrant flocks of white and Abdim's storks. Patience may also reward you with glimpses of leopard, cheetah, hyena, jackal, elephant, warthog, buffalo, impala, buffalo, hartebeest, eland and lots of other antelopes. Your wildlife-viewing will be dramatic, and the experience memorable.



As you descend onto the floor of the crater you may see the local Maasai as they take their cattle down the steep walls of the crater. It is their right, negotiated with the government and parks authority, to graze their cattle in about 75% of the crater floor. The mix of cattle with the wild animals makes for some terrific photographs, and the interaction between domestic and wild animals is almost non-existent. Your game-viewing will be dramatic, and the experience memorable. Following a hot lunch in the crater, drive to your lodge where the rest of the day is at leisure.

Overnight at NGORONGORO SERENA SAFARI LODGE. (B,L,D)

DAYS 7/8~THURSDAY/FRIDAY~JUNE 16/17

SERENGETI NATIONAL PARK~DUNIA CAMP

This morning, drive to the legendary Olduvai Gorge. The drive to the gorge is breathtaking – passing through a spectacular mix of savannah



grassland and volcanic hills, where red-robed Maasai graze their cattle, before it drops steeply down into the gorge itself. The name originated from the Maasai word “ole” meaning “the place of” and “dupai” meaning “wild sisal,” a local plant resembling aloe which grows abundantly in the area. This plant has yellow-green, succulent, spear-like leaves which form dense clumps, binding the loose soil of the gorge and sheltering many other plants and animals. Domesticated sisal is used to produce rope, rugs and baskets which are sold at the local markets and is one of the biggest exports of Tanzania.

Olduvai is one of the world’s most important paleoanthropological locations. This is where, in 1959, Mary and Louis Leakey found fossil evidence of the 1.7-million-year-old Australopithecus Boisei (Zinjanthropus) and Homo Habilis (Handyman). Thousands of stone tools, some of which have been used by Homo Habilis, have been found at Olduvai; the oldest style is easiest to remember, because it is called Oldowon. In addition to the remarkable human fossils, prehistoric elephant, giant horned sheep and enormous Ostrich fossils have been found here and extinct species unearthed include three-toed horses and giant antelope. Since the Leakeys first began



searching the area for clues to our distant past, more than sixty hominid remains have been excavated, belonging to four different hominids, showing the gradual increase in brain size and in the complexity of their stone tools. The gorge itself is a very steep-sided ravine roughly 30 miles long and 295 feet deep. It resembles a small Grand Canyon with exposed strata of different layers where the deposits of rich fossil fauna, hominid remains and stone tools were found. The gray lines are volcanic tuffs and eruptions are used to estimate the age of the fossils. You will want to visit the museum which contains a cast of the 3.7 million year old footsteps of Australopithecus Afarensis preserved in solidified volcanic ash, found at nearby Laetoli by Mary Leakey in 1979. Outside the museum a Tanzanian guide will explain the geological features of the gorge and the work of the Leakeys.

Resume your drive to Serengeti National Park (3,646,500 acres), the jewel in the crown of Tanzania’s protected areas with over 3 million large mammals roaming its plains. It lies between Ngorongoro and Lake Victoria and adjoins Kenya’s Maasai Mara. The Serengeti has come to symbolize paradise to all, including the local Maasai, who have grazed their cattle on the vast grassy plains for generations. To the Maasai, it is Siringitu – “the place where the land moves on forever.” Today, the Serengeti National Park, the Ngorongoro Conservation Area, and the Maasai Mara Reserve across the border in Kenya, protect the greatest and most varied collection of terrestrial wildlife on earth, and one of the great last migratory systems still intact. More than a million wildebeest, accompanied by hundreds of



thousands of zebras and other herbivores, descend upon the short-grass plains of the southeastern Serengeti at the start of the rainy season around December. After calving in January and February, they scatter over the southern and central plains. By May the rain ends, the grass has been reduced to stubble, and the animals begin their long march to dry-season grazing grounds near the permanent waters of the Serengeti's northern woodlands and Kenya's Maasai Mara. Reaching these destinations by July or so, they remain until October, when they head back to the southeastern Serengeti. This struggle for survival continues unaided and unaltered through the millennia!

The Serengeti is incredible to visit any time of the year. In the Seronera Valley towering yellow fever trees and palm thickets line the Seronera River and its hippo pools. This is a superb area for seeing predators such as lion, leopard and cheetah, and their prey – giraffe, topi, Bohor reedbuck, Defassa waterbuck, buffalo and impala. The kopjes (prehistoric rock outcroppings) host hyraxes, dwarf mongooses, and red-headed agamas, while patience might reward you with a sleepy black-maned male lion or leopard. The open grassland is home to large groups of Thomson's and Grant's gazelles, spotted hyena, jackal, and such birds as the Double-banded Courser, Yellow-throated Sandgrouse, Red-capped Lark, Fischer's Sparrow-lark, and Capped Wheatear. Your twice-daily wildlife drives will allow ample viewing. As an optional excursion, you can take a balloon safari for an exhilarating experience over the Savannah as the early sun rises and the animals are more active.

Dunia Camp is located in the Moru Kopjes area in the south central Serengeti. The unique camp has eight spacious en-suite tents with flush toilets, large bathrooms and a private verandah overlooking the Kopjes. A close-knit team of staff provides guests with a warm welcome and prepares delicious bush meals under the stars of the Serengeti sky. Game drives from Dunia Camp offer an excellent variety of habitats and combine migration viewing with the search for big cats as well as rhino, Moru Kopjes currently being the only area in the Serengeti where this illustrious animal can be viewed with some certainty.

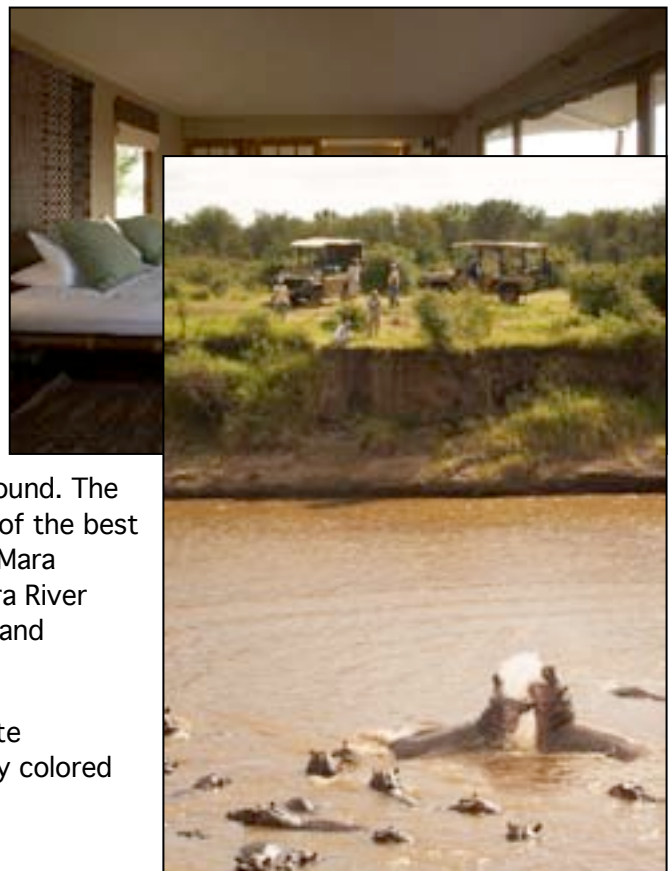
Overnights at DUNIA CAMP. (B,L,D Daily) www.asilialodges.com

DAYS 9/10~SATURDAY/SUNDAY~JUNE 18/19

SERENGETI NATIONAL PARK~SAYARI CAMP

Today's flight takes you to your luxurious home for the next two days. There is no better way to see the nature of Africa than to immerse yourself directly in it, and that is what Sayari Camp is - an immersion in African nature. The name Sayari comes from the Maasai word "Siring" which means endless plains, the perfect description of the Serengeti. The camp is located next to the Mara River, which each year sees millions of zebra and wildebeest taking their chances by crossing it on their way north through the open plains of the Serengeti. From July to November, a stay here will put you in the best position for witnessing this, though it has a high density of cats, elephants, crocodiles and hippos all year round. The camp is also unique in that it offers access to what is one of the best wildlife-viewing secrets in Northern Tanzania – the superb Mara Triangle, a wedge of sloping grassland that divides the Mara River from the Kenyan border packed with grazers, the Big Five and endless varieties of birds.

There are just fifteen expansive tents, each with an en-suite bathroom, ceramic basins, and hot shower. There's brightly colored



African artwork and comfortable king-size beds, topped with throws and cushions. You can have three sides open to the elements if you wish, while outside, under the canopy, is a sofa perfectly placed for watching the sunset. Meals are taken at the dining tent, or out in the open air if you prefer. The chef will prepare a three-course meal each evening for you; the food is fairly simple, freshly prepared and there's plenty of it. Expect soups, pasta, roasted vegetables, chicken curries, potato gratins and homemade bread, baked each day. Overnights at SAYARI CAMP. (B,L,D Daily) www.asilialodges.com

DAY 11~MONDAY~JUNE 20

ARUSHA/AMSTERDAM

After the morning's activities, transfer to the airstrip for your flight to Arusha where a dayroom is provided for your use at LAKE DULUTI SERENA. Later this evening, return to the airport for your overnight flights home. (B)

DAY 12~SUNDAY~JUNE 21

AMSTERDAM / FT. LAUDERDALE

This morning your jet lands in Amsterdam where you connect with your flights home, bringing with you the memories of all the wonderful sights of East Africa. (Meals Aloft)

OPTIONAL PRE-EXTENSION TO ZANZIBAR



DAY 1~SUNDAY~JUNE 5

FT. LAUDERDALE/ EN ROUTE

Your journey begins as you board your overnight flight to Amsterdam. (Meals Aloft)

DAY 2~MONDAY~JUNE 6

AMSTERDAM/ARUSHA

The morning finds you in Amsterdam where you connect with your flight to Arusha. Upon arrival in Arusha in the evening you will be met by your Classic Escapes representative and transferred to your hotel. Overnight at the LAKE DULUTI SERENA. (Meals Aloft)

DAY 3~TUESDAY~JUNE 7

ARUSHA / ZANZIBAR

Transfer to the airstrip this morning for your flight to Zanzibar, the best kept secret in the Indian Ocean, with its fascinating history and magnificent beaches. Upon arrival at the airport you will be transferred to the Zanzibar Serena Inn, which has joined the ranks of the world's finest resorts as a member of *Small Luxury Hotels of the World*

The Assyrians, Sumerians, Egyptians, Phoenicians, Indians, Chinese, Persians, Portuguese, Omani Arabs, Dutch and English have all been here at one time or another. Some, particularly the Shirazi Persians and Omani Arabs, stayed to settle and rule. With this influence, Zanzibar has become predominantly Islamic, with the remaining population made up of Christians, Hindus and Sikhs. The earliest visitors to Zanzibar were Arab traders who are said to have arrived in the 8th century. For centuries they sailed with the Monsoon winds from Oman to trade primarily in ivory, slaves and spices. The earliest building that remains on Zanzibar is the mosque at Kizimkazi



The earliest building that remains on Zanzibar is the mosque at Kizimkazi

which dates from 1107, and is a present-day tourist attraction. Zanzibar has two main islands, Unguja (normally known as Zanzibar Island) and Pemba. Stone Town, located on Zanzibar Island, is the old city and cultural heart of Zanzibar, where little has changed in the last 200 years. It is a place of winding alleys, bustling bazaars, mosques and grand Arab houses whose original owners vied with each other over the extravagance of their dwellings. This one-upmanship is particularly reflected in the brass-studded, carved, wooden doors – there are more than 500 different examples of this handiwork. Stone Town was recently and deservedly declared a World Heritage Site by UNESCO.

In the afternoon begin to experience Zanzibar's fascinating history and vibrant culture with a tour of fabled Stone Town. Visit the House of Wonders, the Palace Museum (People's Palace), Dr. Livingstone's House, the Arab Fort, and the National Museum of Zanzibar, which houses relics from the times of the Sultans and early explorers. See Zanzibar's bustling market, winding alleyways, ornately carved and studded doors, two cathedrals and countless mosques. Visit the Anglican Church, built in 1874 on the site of the old slave market, and see the chambers beneath it where slaves were held before they were sold. You will see the site of Sultan Barghash's harem at Marahubi, with its colorful history. Stone Town also has many excellent gifts shops with plenty of souvenirs and handicrafts to choose from.



Zanzibar Serena is a stunning property set in two historic seafront buildings that have been masterfully restored to their previous grandeur, when Zanzibar was a crossroads visited by travelers and merchants from all corners of the globe. Interiors echo Zanzibar's rich Arabic influence – or ustaarabu – as well as the island's indigenous East African roots. The rooms are elegant and romantic, each overlooking the azure waters of the Indian Ocean. There is a restaurant and bar as well as an outdoor swimming pool with poolside cafe bar and shop. An extensive selection of recreation and water sport activities are available to guests.

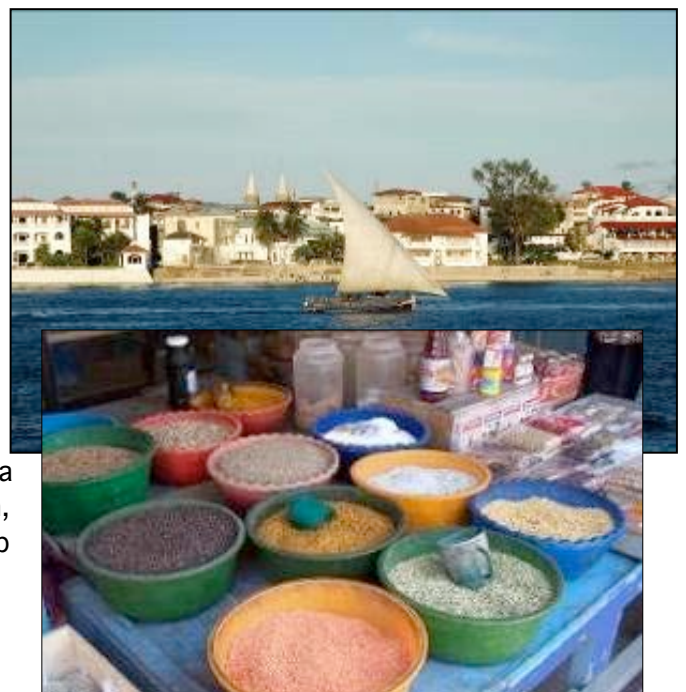
Overnight at the ZANZIBAR SERENA INN. (B,D) www.serenahotels.com/zanzibar/inn/home.asp

DAYS 4/5/6~WEDNESDAY/THURSDAY/FRIDAY~ JUNE 8/9/10 ZANZIBAR~SPICE TOUR & JOZANI FOREST/ MATEMWE BUNGALOWS

This morning, you will visit a plantation and have your senses dazzled with fresh spices. A detailed description will be given about these spices and their uses in cooking and cosmetics. You will be fascinated by the sheer number of spices produced and their incredible value for many ailments. This is an excellent opportunity to purchase spices and spice oils at the best prices. The history of Zanzibar would be incomplete without the cloves, nutmeg,



cinna
mon,
pepp
er



Schedules, accommodations and prices are accurate at the time of writing. They are subject to change.



and many other spices which brought the Sultans of Oman and the beginnings of the infamous slave trade.

Drive to the Jozani Natural Forest Reserve, located in the central east region of Zanzibar Island and home to the rare red colobus monkey, endemic to Zanzibar (so named for a red spot on its head). These habituated monkeys are full of character and, although completely free, tend to feed just outside the reserve's perimeter. They are extraordinarily photogenic as they leap from tree to tree just above you. Jozani is home to other species including Syke's monkeys, small buck and bushpigs. The elusive Zanzibar leopard, last sighted several years ago, is said to feed here at night. (Perhaps this is why the reserve is only open during the day?) Jozani has an excellent nature trail and the guides are well-trained and informative.



Continue to your resort by the sea and your home for the next three nights, where the remainder of the day is at leisure. Enjoy two full days of decadent leisure as you relax at your own pace. One afternoon, you may visit Kizimkazi (*optional, at an additional cost*), an interesting fishing village at the southern point of the island that is the site of a 12th Century mosque, and the earliest evidence of Islam in East Africa. Here you will board a small boat to search for the spinner and bottle-nosed dolphins that are commonly seen here. Once found, you will be invited to enter the water to swim with the dolphins that seem to be as curious about you as you are of them.

Matemwe Bungalows is a small, intimate guest lodge situated on a rocky outcrop above a magnificent stretch of beach in north-east Zanzibar. It's by far one of the best, and most popular, guest lodges in Zanzibar, offering wonderful personal service and great views over Mnemba. The rooms of the main lodge are strung out along the rocky coastline. There is a beautiful sweep of white beach situated at the far end beyond the lodge. The thatched bungalows nestled in gardens along the sea cliff, all with views of the sea. The lodge offers kayaking and snorkeling within the protective fringing reef as well as sailing on their dhow or with a local fisherman in their wooden outrigger canoe. You can also walk to the village or explore the beach on hired bicycles. The open-walled restaurant is gloriously positioned with views of the ocean. It's decorated attractively with light wooden tables and dark-blue canvas chairs. Meals combine African and European flavors. Breakfast is a variety of fruit, yoghurt, eggs and bread. Ask for the spicy tea. Lunch is a generous buffet and dinner usually is a three-course, set meal with a choice of meat, fish or vegetarian. The



desserts choccie pud and crème caramel - are always delicious.

Overnights at the MATEMWE BUNGALOWS. (B,L,D Daily) www.matemwe.com

DAY 7~SATURDAY~JUNE 11
ZANZIBAR/ARUSHA

Your final morning is at leisure to relax and enjoy this paradise. This afternoon transfer to the airport for



Schedules, accommodations and prices are accurate at the time of writing. They are subject to change.



your flight to Arusha with the group arriving from the USA this evening. (B)

OPTIONAL POST EXTENSION TO RWANDA

A minimum of 5 travelers is required for this extension.



DAY 11~MONDAY~JUNE 20

SERENGETI/KIGALI

Bid farewell to the rest of the group returning to Arusha and departing for the USA today, and prepare for your next adventure as you fly to Kigali, capital of Rwanda. A tiny, landlocked republic in Equatorial Africa, Rwanda lies on the eastern rim of the Albertine Rift and the watershed between Africa's two largest river systems: the Nile and the Congo. Often called the "land of a thousand hills", Rwanda is a mountainous country with a moist, temperate tropical year-round climate.

In addition to the magnificent mountain gorillas and several other primates for which it is renowned, Rwanda is also home to a tremendous variety of bird life, making this tiny country a birder's paradise! Of the 650 bird species found here, some are West African forest species whose eastern range extends to Rwanda. Found throughout Rwanda are the Cassin's Hawk Eagle, Black-winged Pratincole,



Olive Woodpecker, Snowy-headed Robin-Chat, Black-faced Rufous Warbler, Wing-snapping Cisticola, Rwenzori Flycatcher, Green-throated Sunbird, and the Many-colored Bush-shrike, and numerous others. In addition, the range of elevations and diverse vegetation types of both of the spectacular parks on this itinerary ensures that each also has its own unique bird fauna.

Your home this evening is located in the center of Kigali's heart. Each of the 104 air conditioned guest rooms include en-suite facilities, in-room mini bar and coffee making supplies, satellite television, telephone and contemporary décor. You may want to take a dip in the pool or work out in the hotel's gym.

Overnight at the KIGALI SERENA. (B,D) www.serenahotels.com

DAYS 12/13~TUESDAY/WEDNESDAY~JUNE 21/22

KIGALI/KINIGI

After breakfast, visit the Genocide Memorial Centre to learn about this country's recent bloody history and the lessons learned so this tragedy never happens again. As an outsider, it is almost impossible to understand the true scope of what really happened here in 1994, but your visit to the center will help bring some of the tragedy to light. You will be able to learn of individual stories of losing family and friends while at the same time focus on the efforts to heal and carry on as one people.



Later, proceed on your drive to Kinigi and the Parc National des Volcans, a part of the Virunga Conservation Area covering more than 3,000 square miles, and is home of five Virunga volcanoes: Sabyinyo, Gahinga, Visoke, Muhabura and the Karisimbi, the highest volcano – all of which are extinct. The Virunga ecosystem is composed of four major vegetation zones: bamboo (base altitude), hagenia and hypericum forest (8,500-10,800 feet), sub-alpine (10,800-13,000 feet) and afro-alpine (above 13,000 feet).

Certainly the main highlight of this park is the mountain gorillas, which spend most of their time in the hagenia woodlands and bamboo forests. During the rainy season when new bamboo shoots are growing, the gorillas spend more time foraging in the bamboo forests at base altitude. This park was the base for Dian Fossey up until her death in 1985 and she focused her work at the Karisoke Research Center for 18 years. There are four habituated gorilla families that can be visited here, most of them on the slopes of the Visoke volcano. The Susa group has 35 individuals, the Amahoro group has 11 individuals, the Sabyinyo group has been divided into two groups ("A" has



13 individuals and “B,” a break way group, has four individuals) and group 13 has seven individuals.

Your group will have the opportunity for one trek per person to view the mountain gorillas today. After breakfast, you will proceed to the nearby park headquarters and meet with your excellent local guides and porters, who will carry your personal items and assist you during the trek. Gorillas here live on the slopes of ancient volcanoes in high elevation forests. Dense bamboo thickets give way to a combination of large meadows and dense herbaceous vegetation zone highlighted by moss-laden hagenia and hypericum trees. Your treks will take you through a fairyland forest, an experience that in of itself is thrilling. As you venture forth, you will spot evidence that the gorillas have been present. The treks can last from four to seven hours (or more) depending on when you spot the gorillas. There is an hour limit to the time you spend with these majestic creatures once you spot them. Tracking gorillas through misty, seemingly impenetrable forests can be an exhausting process as the paths are often slippery, entangled and wet. However, this effort is quickly forgotten the minute you encounter these beautiful creatures. They instantly capture your full attention with their acrobatic antics and cacophony of grunts, screeches and chest beating.

Your accommodation for the next three nights is the Gorilla Mountain View Lodge. Your lovely cottage is comfortable and has en suite bathrooms, hot and cold water and you are attended to by friendly and helpful staff. With a central bar, lounge and dining room area, all rooms have magnificent views of the Virunga Mountains and the Ruhengeri Valley.

Overnights at GORILLA MOUNTAINVIEW LODGE. (All Meals Daily)



DAY 14~THURSDAY~JUNE 23

KINIGI – OPTIONAL ACTIVITIES

Those who wish to trek twice will get a chance this morning (*second gorilla trek at an additional cost*). After breakfast take a short drive back to the Park Headquarters and meet with the local guides and trackers who will give another talk on the etiquette of gorilla trekking. Then hike into the park for a second gorilla trek, visiting a different family this time.

OR

A second possibility for today is to trek for the golden monkeys that make their home in the Virungas. This endangered primate, a subspecies of the Blue monkey (or Sykes monkey,) is restricted to this area of the world and lives in groups of varying sizes, from a few to 80 or more individuals, and are usually led by an adult male. They prefer the bamboo thickets as they live mostly on bamboo products such as shoots and leaves, as well as on invertebrates, flowers and shrubs.



Overnights at GORILLA MOUNTAINVIEW LODGE. (B,L,D)

DAY 15~FRIDAY~JUNE 24

KINIGI – OPTIONAL ACTIVITIES/KIGALI/EN ROUTE

After breakfast, an optional activity is offered as you report to the headquarters for your excursion to Karisoke and pay a visit to the former Karisoke Research Center where the grave of Dian Fossey is located. Fantastic views, lush forested slopes and an exceptional environment awaits you. Karisoke became one of the most successful primate study sites in the world in the 1970s. For the past three decades the mountain gorillas of Karisoke Research Center have been the subject of many studies focusing on their behavior and ecology. Karisoke still functions as an important base for international research; biologists come and go, some studying the gorillas, and some focusing on other aspects of the environment and its wildlife. Karisoke is still funded by the "Digit" Fund, although it has been re-named as "The Dian Fossey Gorilla Fund".



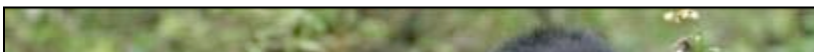
In the afternoon, drive back to Kigali. Enjoy dinner before being escorted to the airport for your return flights home. (B,L,D, Meals Aloft)



DAY 16~SATURDAY~JUNE 25

AMSTERDAM/ATLANTA/FORT LAUDERDALE

This morning you land in Amsterdam where you will connect with your flights home, bringing with you the special memories of East Africa. (Meals Aloft)



A giraffe in a savanna landscape with a hot air balloon in the background.

OPTIONAL EXCURSION IN THE SERENGETI

BALLOON SAFARI

Experience an exhilarating balloon safari for the most incredible way of viewing wildlife. It begins in the early morning and you have an hour of uninterrupted views of wildlife from the air – the best way to see the incessant movement of animals and the fabulous vistas of Tanzania. During the flight, you will ascend to a high altitude to take in an amazing panoramic view and then descend to treetop level and silently glide above the wildlife below. Upon landing, enjoy a “bubbly” brunch, set especially for you in the middle of the plains. Zebra and wildebeest may be your dining guests, and Africa’s colorful birds may vie for a crumb of your bread. You then meet with your driver/guide and continue your safari. Many consider this one of the most memorable experiences of their safari. We suggest booking in advance to avoid disappointment. Children, aged 7 & above, as well as above 4 foot 6 inches, may also participate.

At present, the costs are as follows:

- Serengeti with collection from your lodge – Dunia Camp: \$445 per person

Reservations for this excursion are necessary before departure from the USA, if you wish to be guaranteed a seat. Full payment must be forwarded to Classic Escapes, 58-25 Queens Blvd., Woodside, NY 11377 to be received at least three weeks prior to departure. If your trip does not materialize due to weather or other reasons, your payment will be refunded upon returning to the U.S.A. However, if you should cancel for any reason, payment is non-refundable.

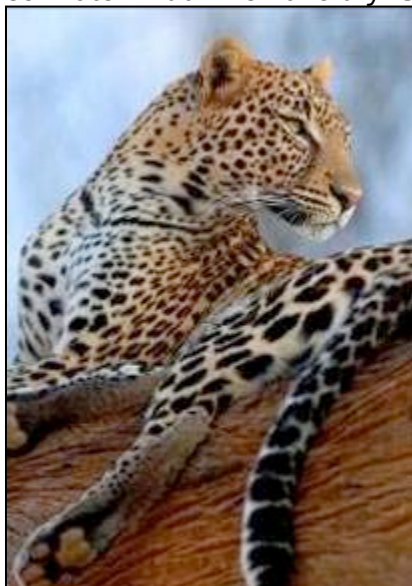
INCLUSIONS

- Flight between Serengeti and Arusha on the main program.
- Round trip flight between Arusha and Zanzibar on the pre-extension.
- Flight between Serengeti and Kigali on the Rwanda extension.
- Superior accommodations throughout as indicated or similar.
- American breakfast in Arusha; all meals while on safari.
- At Oliver's Camp, Dunia Camp and Sayari all drinks are included (except premium brands).
- All wildlife viewing by 4x4 vehicles in Tanzania, driven by a naturalist driver/guide.
- Professional Naturalist with a minimum of 10 passengers on main trip.
- Host from the Ft. Lauderdale Museum of Discovery & Science will accompany the group with a minimum of 10 travelers on both main and extension programs.
- All applicable hotel and lodge taxes and gratuities for baggage handling.
- Complimentary bottled water in vehicles and during meals.
- All park entry fees.
- Complimentary passport wallet and luggage tags.

EXCLUSIONS

- Round trip air transportation between Ft. Lauderdale and Arusha including departure taxes and fuel surcharges (subject to change). The extension returns from Kigali (quoted separately).
- Permit to see the mountain gorillas in Volcano National Park, Rwanda (\$750 per person, currently).
- Permit to see the golden monkeys in Rwanda (\$100 per person, currently).
- Karisoke trek (\$75 per person, currently).
- Passport and visa fees and service charges for obtaining visas. Visas are currently required for Tanzania, but not Rwanda. (Subject to change)
- Excess baggage charges levied by airlines.
- Gratuities to drivers/guides/naturalists and other conveyance attendants.
- Meals and beverages, other than specified.
- Laundry and other items of a personal nature.
- Optional insurance policy.
- Cost for anything not specifically mentioned in the listing above.

Please Note That The Itinerary Sequence Is Correct At The Time Of Writing,
But Is Subject To Change.



THINGS YOU NEED TO KNOW ABOUT TANZANIA & RWANDA

Participants

- Participants must be able to climb in and out of safari 4x4 vehicles or minibuses and small aircrafts unassisted. They should also be able to tolerate riding on uneven, bumpy dirt roads for long periods of time (6-9 hours maximum), as well as some off-road experiences when opportunities allow.
- Participants should also be able to stand and / or walk moderate distances at an easy pace for up to a few hours at a time when visiting villages, towns or other sites. Some, if not most, of this walking may be on uneven ground or uphill, often at higher elevations and altitudes that many people are not used to.

Rwanda

- Visitors must be in excellent physical condition, without any heart problems and be prepared to spend strenuous days in humid rain forests, steep terrain and high altitude trekking for chimpanzee and gorillas, as well as other primates. Your walks can be arduous, tough and wet. Waterproof hiking boots, trousers and long sleeved closed shirts, garden gloves, waterproof clothing and poncho are essential.
- You may walk for many hours before you even come across the gorillas (or if lucky, find them in a hour!). Your time with the gorillas is limited to one hour before you must trek back to the camp. You should always consult your personal physician before embarking on such an adventure.

In general, this trip requires:

- Flexibility and good humor – unexpected changes and/or glitches will occur
- A spirit of adventure and curiosity
- Interest in and willingness to appreciate a destination with uneven infrastructure and a bending definition of comfort. That being said, some locations are nestled in absolute luxury where pampering is the norm.

Air Schedules

Choosing the best possible air arrangements for our travelers is always a challenge. We work with many airlines that offer the best level of service, routings and value for our programs. While there may indeed be more direct routings available with another airline, the cost of these flights may not be within the budget that allows us to give you the best value possible. If you prefer to purchase your own international air, please feel free to choose the “land only” rate for this program. **The start and end city for the land only program is Arusha, Tanzania. The post extension returns from Kigali.**



BRING-A-BOOK FOUNDATION

Your safari will include a visit to a local school. We encourage you to bring colorful books and magazines, as well as schools supplies such as pens, paper, crayons, soccer balls, etc., which you can present to the children during your visit. Many of these children have never owned a book in their life and the connection you'll make with them is invaluable. You'll find that children in the schools are eager to meet with visitors, practice their English, learn about your culture and proudly share their own. You are often welcomed with a local song or dance.

After seeing schools first hand, meeting the dedicated teachers working under the most difficult conditions and children hungry for knowledge, many travelers have wanted to help the schools they visited or continue to support a child's learning opportunities after they return to their homes. Bring-A-Book is an innovative effort adopted by Classic Escapes to expand education opportunities for school children. The Bring-A-Book Foundation is a registered Kenyan Charitable Trust that was created as a way to facilitate travelers' wishes to help the schools and is used to get books into the hands of children as quickly and economically as possible. With compassionate ground operators such as Rangers Safaris, Wilderness Safaris and &Beyond, Classic Escapes has expanded the reach of BAB to Tanzania, South Africa and Zambia, and to other countries our travelers visit around the world. Information will be given to you with your final documents, but if you wish to help further, feel free to call Classic Escapes at 800-627-1244 for details.



CLASSIC ESCAPES CONSERVATION FUND

In keeping with our mission to provide exciting, educational, and fun-filled experiences that nurture and directly support the diverse wildlife and cultures we visit around the world, Classic Escapes has established the Classic Escapes Conservation Fund to ensure that a percentage of all profits go to support conservation and wildlife researchers performing their critical work in the field. Project support has included wild dog, elephant, rhino and cheetah conservation in Botswana, Kenya, Tanzania and Namibia, penguins in Punta San Juan Peru, tiger preservation in India, and sponsoring school children in Kenya, among many other projects around the world. By traveling with Classic Escapes, you are supporting travel as a tool for building the mutual respect, awareness and understanding that are vital to preserving this planet for future generations.

YOUR JOURNEY AT A GLANCE

INCLUDING: ARUSHA, TARANGIRE NATIONAL PARK , NGORONGORO CRATER & SERENGETI NATIONAL PARK

SPONSORING ORGANIZATION: FT. LAUDERDALE MUSEUM OF DISCOVERY & SCIENCE

ESCORTED BY: AN ESCORT FROM FT. LAUDERDALE MUSEUM OF DISCOVERY & SCIENCE

DATES: JUNE 10 To 21, 2016

COST: PER PERSON, BASED ON DOUBLE OCCUPANCY	MAIN PROGRAM BASED ON 10 TRAVELERS	RWANDA POST EXTENSION BASED ON 10 TRAVELERS	ZANZIBAR PRE- EXTENSION BASED ON 10 TRAVELERS
LAND ONLY COST	\$7,895 PER PERSON	\$3,895 PER PERSON INCLUDING FLIGHT BETWEEN SERENGETI & KIGALI	\$2,695 PER PERSON INCLUDING ROUND TRIP FLIGHT BETWEEN ARUSHA & ZANZIBAR
SINGLE ROOM SUPPLEMENT*	\$2,995 PER PERSON, ADDITIONAL	\$795 PER PERSON ADDITIONAL	\$495 PER PERSON, ADDITIONAL
ECONOMY ESTIMATED AIRFARE FROM FT. LAUDERDALE, INCLUDING ESTIMATED DEPARTURE TAXES & FUEL SURCHARGES (SUBJECT TO CHANGE), ECONOMY**	\$2,990 PER PERSON, ADDITIONAL ECONOMY, ROUNDTrip TO ARUSHA	N/A	N/A
PLUS, GORILLA PERMIT IN RWANDA	N/A	\$750 PER PERSON	N/A
PLUS, KARISOKE TREK IN RWANDA	N/A	\$75 PER PERSON	N/A
PLUS, GOLDEN MONKEY TREK IN RWANDA	N/A	\$100 PER PERSON	N/A

*SINGLE SUPPLEMENT: RATE IS VALID FOR FIRST TWO SINGLE ROOMS BOOKED. IF MORE THAN TWO SINGLE ROOMS, ADDITIONAL SUPPLEMENT WILL APPLY. SINGLES ARE ASSIGNED ON A FIRST COME/FIRST SERVE BASIS.

ALL INTERNATIONAL AIRFARES ARE SUBJECT TO CHANGE AND BASED ON MINIMUM OF 10 TRAVELERS. TAXES ARE SUBJECT TO CHANGE UNTIL TICKETED. IF LESS THAN 10 TRAVELERS, THE FARE WILL INCREASE & SUPPLEMENTAL COSTS WILL BE GIVEN TO THE TRAVELERS PRIOR TO ISSUING THE TICKETS, APPROXIMATELY TWO MONTHS PRIOR TO DEPARTURE . **NOTE THAT THE SPECIAL RATES NEGOTIATED BY CLASSIC ESCAPES ARE NOT UPGRADABLE.

DEPARTURE CITY: FT. LAUDERDALE

(OTHER DEPARTURE CITIES AVAILABLE UPON REQUEST AT ADDITIONAL COST)



CONDITIONS OF TRAVEL:

REGISTRATION

HOW TO BOOK: Fill out and sign the enclosed reservation form and send it, along with the relevant deposit as shown below, to: Classic escapes Inc. 58-25 Queens Blvd., Woodside NY, 11377. Upon receipt of your signed reservation form and deposit, we will, subject to availability, reserve your spot on the tour. You may consider your booking confirmed when you receive a confirmation notice and invoice from us.

PAYMENTS

DEPOSIT: A deposit of \$750 per person for the main trip and \$250 for either extensions plus \$750 for the gorilla trek, \$100 for Golden Monkey Trek and \$75 for Karisoke Trek in Rwanda must be submitted at the time of booking. Deposits may be paid by check or charged to American Express, MasterCard, Visa or Discover.

FINAL PAYMENT: Final payment is due 95 days before departure (March 7, 2016) – you will receive a final invoice. Final payment is payable by check or money order ONLY.

RATES: Rates are based on the minimum number of guests outlined in this document, plus airfare costs, currency exchange rates and other factors and are subject to change. Though it is rare for Classic Escapes to make a price adjustment after promotion of an itinerary, we do reserve the right to assess a surcharge if the minimum is not met, or if increases are forced upon us by airlines or other partners or because of changes in currency exchange rates.

NOT INCLUDED: Cost of passport and visa fees, and service charges for obtaining visa fees; excess baggage charges levied by airlines; laundry and other items of a personal nature; optional personal, baggage and tour cancellation insurance policy; cost for anything not specifically included in listing above.

SINGLE SUPPLEMENT: The quoted rate is valid for the first two single rooms booked and on a first-come, first-served basis. If more than two single rooms are needed, an additional supplement will apply. Single accommodations are not guaranteed, but will be provided at additional cost if available (see reservation form for cost.) The single room supplement pays for privacy, not better accommodations. For passengers who are traveling alone and wish to share a room with another tour member, we will do our best to provide a roommate. However, if this is not possible, you will be required to pay the single room supplement prior to your departure from the USA.

GRATUITIES AND TAXES: Gratuities for baggage handling, service charges and taxes imposed by hotels, and entrance fees to all points of interest as outlined in the itinerary are included. U.S. and foreign airport taxes are included in air costs. Tips to drivers and naturalist are **NOT** included.

CANCELLATIONS, DEVIATIONS & CHANGES

TRIP INSURANCE: Because of the array on unforeseen circumstances that could delay or cancel a guest's trip, we highly recommend that guests purchase an optional insurance policy. Information will be sent to registrants.

CANCELLATION POLICY: Cancellations are only effective on receipt of written notification. The following per person fees are applicable on this tour:

- Up to March 7, deposit is forfeited plus all permits in Rwanda.
- March 8- March 27, less 75% of tour cost, plus all permits in Rwanda.
- After March 28, 100% of tour cost.

These cancellation fees are also in addition to any fees imposed by airlines.

WE STRONGLY RECOMMEND THAT YOU OBTAIN THE OPTIONAL INSURANCE POLICY.

CHANGE FEES: Once you reserve your tour, changes are possible subject to availability of air or land space at the time of request. Should there be any change fees imposed by airlines or ground operators, or additional costs incurred due to availability of any space, this cost will be invoiced to you.

SPECIAL ARRANGEMENTS: We would be happy to make additional travel plans for you, including specially arranged pre- or post-tour extensions different than those that may be offered in conjunction with this tour. A service charge of \$150 per person (over and above the cost of the services required) will be assessed.

DOCUMENTS

PASSPORT & VISAS: The onus is upon the guest to ensure that passports and visas are valid for the countries visited and for the applicable time period, as outlined by the U.S. Department of State (travel.state.gov) or by the passport holder's country. Classic Escapes, their staff and their agents cannot be held liable for any visas, etc. not held by the guests, nor for the cost of obtaining visas.

PRE-DEPARTURE INFORMATION: Upon receipt of your registration and deposit, we will send a pre-departure packet to you. This packet contains all the information you need to prepare for your tour, including the complete itinerary, packing checklist, required documents, insurance information, etc.

FINAL DOCUMENTS: Final documents and tickets will be sent to you approximately two weeks prior to departure, provided all monies have been paid in full.

TRANSPORTATION

OPTIONAL AIR TRANSPORTATION: Roundtrip, economy-class flights via DELTA AIR LINES /KLM ROYAL DUTCH AIRLINES and/or other IATAN carriers are between FT. LAUDERDALE, and the destination city noted in the itinerary. Rates are based on special promotional fares; cancellation fees apply once tickets are issued. Departures from other cities in the USA are possible at additional cost; inquire at the time of reservation. Please note that these promotional fares are subject to 10 passengers traveling together on the same airline routing and itinerary. If this minimum is not met, the special group rates are not applicable and it might become necessary to issue instant purchase tickets earlier than when final payment is due in order to take advantage of airfares that are similar to the group rates. Should this occur, you will be contacted with the details.

AIRLINE SEATING: For DELTA AIR LINES/ DELTA AIR LINES /KLM ROYAL DUTCH AIRLINES, we request seats together for the group. All planes are non-smoking. We can request a seating preference on your behalf, however requested seats cannot be guaranteed. Requests should be made in writing no later than 60 days prior to departure. Bulkhead and/or emergency row seats can only be requested at airport check-in on the day of departure. Boarding passes will only be issued at the airport on the day of departure. You may inquire about seat changes during check in, based on availability and is at the sole discretion of airport staff.

FREQUENT FLYER MILEAGE: As mentioned, we work primarily with DELTA AIRLINES & KLM ROYAL DUTCH AIRLINES. For a list of the airline's partners, visit http://www.delta.com/content/www/en_US/skymiles.html. Obtain frequent flyer mileage on any of these carriers. Present your frequent flyer card for all flight check-ins and keep the boarding passes until you receive a statement with the mileage credit

TRANSFERS: Roundtrip airport transfers are included in the tour for guests arriving on group flights. If travelers make their own air arrangements, they will be subject to extra transfer fees.

DEPARTURE TAXES & FUEL SURCHARGES: Please note the amount of departure tax and fuel surcharges reflected in the airfare is subject to change, at the discretion of governments and airlines, and with no advance notice. Should this occur, you will be invoiced prior to departure for any additional taxes imposed.

TRIP DETAILS

ACCOMMODATIONS: You will marvel at the wonderful accommodations provided throughout your tour. All rooms have private bathroom facilities and air conditioning and/or fans. All rates are based on double occupancy. Most rooms are twin-bedded, but king-size beds are occasionally available and should be requested in advance. Accommodations listed in this itinerary are correct at time of writing, but on rare occasions may be substituted for a different property of comparable quality.

MEALS: All meals as specified in the itinerary. Please notify us if you have special dietary needs or requests, and we will do our best to accommodate.

INOCULATIONS: When it comes to vaccination and disease prevention, we suggest that travelers first review information provided by the U.S. Centers for Disease Control and Prevention (www.cdc.gov/travel) and then review those details with their personal physicians.

WATER: It is always advisable to drink bottled and/or filtered water when traveling overseas. Safe drinking water will be provided to travelers free of charge in the vehicles and during meals.

BAGGAGE: On average, international flights from the USA allow two pieces of checked luggage, each not exceeding 50 pounds; however we always recommend that you check your airline's policy just before departure, as luggage limitations are

always subject to change. Despite this weight allowance, we always suggest guests travel light. Also soft-sided duffel bags are ideal for this tour, as they stow best in vehicles and airplanes with limited space.

TERMS & CONDITIONS

RESPONSIBILITIES: Neither Classic Escapes (the Company) nor any person or agent acting for, through or on behalf of the Company shall be liable for any loss or damage whatsoever arising from any cause whatsoever and without restricting the generality of the foregoing shall particularly not be responsible for loss or damage arising from any errors or omissions contained in its brochure or other literature, loss or damage caused by delays, sickness, theft, injury or death. In addition the Company shall have the right at any time at its discretion to cancel any trip or the remainder thereof or make any alteration in route, accommodation, price or other details and, in the event of any trip being rendered impossible, illegal or inadvisable by weather, strike, war, government or interference or any other cause whatsoever, the extra expenses incurred as a result thereof shall be the responsibility of the passenger. The Company may at its discretion and without liability or cost to itself at any time cancel or terminate the guest's booking and in particular without limiting the generality of the foregoing it shall be entitled to do so in the event of the illness or the illegal or incompatible behavior of the guest, who shall in such circumstances not be entitled to any refund. The person making any booking will, by the making of such booking, warrant that he or she has authority to enter into a contract on behalf of the other person included in such a booking and in the event of the failure of any or all of the other persons so included to make payment, the person making the booking shall by his/her signature thereof assume personal liability for the total price of all bookings made by him/her.

PHOTOGRAPHY: The Company reserves the right without further notice to make use of any photograph or film taken on the tour by our photographers without payment or permission. We guarantee that no photographs of a compromising nature will be used.

CHANGES TO SCHEDULES: Although every effort is made to adhere to schedules it should be borne in mind that the Company reserves the right and in fact is obliged to occasionally change routes and hotels as dictated by changing conditions.

REFUNDS: While the Company uses its best endeavors to ensure that all anticipated accommodation is available as planned, there shall be no claim of any nature whatsoever against the Company for a refund either in the whole or part, if any accommodation or excursion is unavailable and a reasonable alternative is not found. If the guest is unable to use any service provided in the itinerary, then there are no refunds due.

AIRLINE CLAUSE: The airlines concerned are not to be held liable for any act, omission or event during the time the passengers are not on board their planes or conveyance. The passengers' tickets in use by the airline or by other carriers concerned when issued shall constitute the sole contract between the airlines and the purchaser of these tickets and/or passengers.

DELAYS: We cannot be held liable for any delays or additional costs incurred as a result of airlines not running to schedule. If one of our guides is unable to take a trip due to illness, etc. we reserve the right to substitute with another guide. This agreement is made subject to and shall be governed by and construed according to the laws of the country in which the trip takes place. Classic Escapes act merely as an agent for the operating companies. To the best of our knowledge the itinerary is correct at the time of printing. We cannot be held responsible for any inaccuracies or changes that may occur after printing.

CONSENT: The payment of the deposit OR any other partial payment for a reservation on a trip constitutes consent by all guests covered by that payment to all provisions of the conditions and general information contained in this brochure whether the guest has signed the booking form or not. The terms, under which you agree to take this trip, cannot be changed or amended except in writing signed by an authorized director of the Company.

SMART TRAVELER ENROLLMENT PROGRAM (STEP)

US Citizens traveling abroad will be registered by Classic Escapes on the Smart Traveler Enrollment Program (STEP). Offered through the US State Department, STEP allows us to register your travel itinerary for the purpose of receiving emergency updates, whether due to natural disaster, civil unrest, or family emergency. For more information please visit <https://step.state.gov/step/>. If you do not wish to be enrolled in STEP, please be sure to notify Classic Escapes at least 10 days prior to departure.

INSURANCE: It is a condition of booking, that the sole responsibility lies with the guest to ensure that they carry the correct comprehensive travel and medical insurance to cover themselves, as well as any dependents/traveling companions

Schedules, accommodations and prices are accurate at the time of writing. They are subject to change.



for the duration of their trip. Classic Escapes, including their representatives, employees and agents will take no responsibility for any costs, losses incurred or suffered by the guest, or guest's dependents or traveling companions.

Please visit the website to obtain an enrollment form – <http://www.travelguard.com/classicescapes/>. For any questions you may have on insurance, contact Travel Guard at 1-866-385-4839.



HELP US GO GREEN

Dear Traveler,

In an effort to help protect our planet, Classic Escapes has begun the transition of becoming paperless. We need your help getting there!

Did you know?

Recycling one ton of paper saves 20 trees, 7,000 gallons of water, three cubic yards of landfill space, 60 pounds of air pollutants, and saves enough energy to power the average home for six months...

Please indicate in the chart below whether or not you prefer to receive paperless correspondence from us – all you need to do is put a check under the “green” symbol for yes or a check under the “NO” for no.

Simply fax or email your responses to reservations@classicescapes.com!

You Will Receive The Following Items For Your Program:	YES	NO
Welcome Letter		
Preliminary Materials – prelude packet and invoice		
Reminder Invoice with balance due		
Paid-in-Full Invoice		
Final Documents – species list, journal and final booklet		

Your Name:

Email Address:

Trip Tour Code: 16AFM0610/Lauderdale

Together we can make the world a better place!

Schedules, accommodations and prices are accurate at the time of writing. They are subject to change.



Thank you for your support,



RESERVATION FORM

FT. LAUDERDALE MUSEUM OF DISCOVERY & SCIENCE ~ TANZANIA

16AFM0610/Lauderdale

Enclosed is my deposit for \$ _____ (\$750 per person plus \$250 for either extension plus \$750 per gorilla trek, \$100 golden monkeys trek and \$75 Karisoke trek in Rwanda, currently and subject to change) to hold _____ place(s) on the classic safari to Tanzania departing June 10, 2016. Cost is \$7,895 per person, double occupancy, land only. Estimated international air from Ft. Lauderdale is \$2,990, including departure taxes & fuel surcharges (currently, subject to change).
Final payment due date is **March 7, 2016**

Please make check payable to CLASSIC ESCAPES and mail to 58-25 Queens Blvd., Woodside, NY 11377 **OR**

Charge deposit to: MasterCard Visa American Express Discover

(Credit Card Authorization form needs to be completed and returned to Classic Escapes via mail or fax to 718-204-4726)

Deposits can be made by credit card; however, **all final payments are required to be made by check or money order only.**

Please note that a copy of your passport will be required to complete your reservation, showing the page with your photograph. Passport must be valid for at least 6 months after the return of your trip.

1) NAME (As appears on passport): Mr. Mrs. Ms. _____

Passport No. _____ Green Card No. _____ Expiration Date _____ Nationality _____

2) NAME (As appears on passport): Mr. Mrs. Ms. _____

Passport No. _____ Green Card No. _____ Expiration Date _____ Nationality _____

NAME FOR NAME BADGE IF DIFFERENT FROM ABOVE: 1) _____ 2) _____

STREET ADDRESS: _____

CITY: _____ STATE: _____

ZIP: _____

PHONES: HOME: () _____ OFFICE: () _____ MOBILE: () _____

E-MAIL ADDRESS: _____ FAX: () _____

- I certify that I have not recently been treated for, nor am I aware of any physical or other condition or liability that would create a hazard to myself or the other members of this tour.
- The two of us above are sharing a room and, where possible, would like a room with: ONE TWO Beds (Make one selection only)
- I am sharing with _____
(form sent separately)
- I need assistance in securing a roommate. I understand if Ft. Lauderdale Museum of Discovery & Science or the tour operator cannot locate one for me by final payment date, I agree to pay the additional single supplement amount. I prefer to share with: Smoker Non-smoker
- I desire single accommodations, if available, and will pay the single supplement additional cost of:
 \$2,995 for the main program \$495 for the Zanzibar pre- extension \$595 for the Rwanda post extension
- I desire to participate in the optional post extension (s)
 \$2,695 for the Zanzibar pre- extension
 \$3,895 for the Rwanda post extension - plus \$750 per gorilla trek, \$100 for golden monkeys trek, \$75 for Karisoke trek
 I wish to have one two gorilla permits - \$750 per person (excluding tips to porters/trackers), subject to availability
 I wish to have a permit to see the golden monkeys - \$100 per person (excluding tips to porters/trackers,) subject to availability
 \$75 for the Karisoke trek (excluding tips to porters)
 Optional Balloon Safari from Dunia Camp: \$445 per person

- Please make my/our round trip air reservations on the group flights from Ft. Lauderdale via Delta Air Lines/KLM Royal Dutch Airlines.
- Please make domestic round-trip air reservations for me from my home city: _____ to connect with the group flights and let me know the additional cost.
- Please send me information on air upgrades for: Business/First Class (only one class - business/first - exists)
Airline Seating Preference Aisle Window Frequent Flier # _____

****We can request a seating preference on your behalf, however this is only a request and NOT guaranteed, as some seating assignments may be airport check-in only. Requests should be made in writing no later than 60 days prior to departure. Bulkhead and/or emergency row seats can only be requested at airport check-in on the day of departure. Also note that even if we do obtain your preferred seat, it is not guaranteed that the seat will be provided during check-in as there might be equipment changes that nullify our selection.**

Schedules, accommodations and prices are accurate at the time of writing. They are subject to change.



I/We will make own air arrangements and will provide you with an itinerary before trip departure.

All rates quoted are based on tariffs and value of foreign currencies in relation to the U.S. dollar in effect as of July 8, 2015, and are subject to change. Refund of deposit is not possible. Refund is made less any cancellation charges levied in accordance with the policy outlined in the accompanying Conditions of Travel. **WE STRONGLY RECOMMEND THAT YOU OBTAIN TRAVEL INSURANCE. RESERVATIONS ARE ACCEPTED SUBJECT TO TOUR CONDITIONS AND WILL BE CONFIRMED ONLY IF ACCOMPANIED BY COMPLETED FORM SIGNED BY THE TOUR PARTICIPANT(S).**

SIGNATURE: _____ DATE: _____

SIGNATURE: _____ DATE: _____

CLASSIC ESCAPES INC.
58-25 Queens Blvd., Woodside, NY 11377
(We recommend that you keep a copy of your selections as noted above for your future reference)



58-25 Queens Blvd., Woodside,
NY 11377

T: (718) 280-5000;

(800) 627-1244

F: (718) 204-4726

E:info@classicescapes.com

CREDIT CARD PAYMENT AUTHORIZATION

Please Note: If you wish to charge your deposit to Visa, MasterCard, American Express or Discover, this authorization form MUST be completed and returned to us along with your reservation form before we can process your application.

I authorize (Classic Escapes Inc.) to charge my VISA/MASTERCARD/DISCOVER/AMEX listed below:

Name appearing on credit card _____

Card number _____ Expiration date _____

Card Verification Number* _____ Card Type _____

Billing address of credit card _____

Amount of transaction _____

Services rendered/Items purchased _____

Phone number _____

Signature _____ Date _____

***How To Locate Your Card Verification Number:**

(Visa, MasterCard, Discover: Locate the credit card number on the back of the card above the signature box. Enter the 3 digit number which follows the credit card number. American Express: Enter the 4 digit number found directly above and to the right of the credit card number.)

I understand that all rates quoted on this tour I'm making a payment on are based on tariffs and value of foreign currencies in relation to the U.S. dollar in effect as of July 8, 2015, and are subject to change Cancellations are only effective on receipt of written notification. The following per person fees are applicable on this tour:

applicable on this tour:

- Up to March 7, deposit is forfeited plus all permits in Rwanda.
- March 8- March 27, less 75% of tour cost, plus all permits in Rwanda.
- After March 28, 100% of tour cost.

These cancellation fees are also in addition to any imposed by airlines.

PLEASE NOTE: At times, our bank requires photocopy of credit card (both sides) and driver's

FT. LAUDERDALE MUSEUM OF DISCOVERY & SCIENCE - TANZANIA
JUNE 10, 2016